

Equalized Assessed Value

Year	Statewide	Cook	Collar	Rest of State	PTELL	Non PTELL
2000	204,178,019,641	90,753,566,063	63,311,676,137	50,112,777,441	166,081,055,397	38,096,964,244
2001	220,330,253,329	99,102,429,909	68,796,684,846	52,431,138,574	179,998,789,853	40,331,463,476
2002	240,809,532,471	110,514,316,975	75,454,702,599	54,840,512,897	198,121,408,229	42,688,124,242
2003	259,727,001,224	119,656,218,887	82,813,240,538	57,257,541,799	214,380,209,749	45,346,791,475
2004	277,898,235,860	129,990,700,755	89,746,385,226	58,161,149,879	230,987,158,687	46,911,077,173
2005	303,038,485,640	143,403,234,714	98,146,325,604	61,488,925,322	252,779,265,684	50,259,219,956
2006	331,336,959,068	157,320,806,461	107,627,211,233	66,388,941,374	276,154,657,299	55,182,301,769
2007	363,068,281,744	174,657,083,706	116,735,695,558	71,675,502,480	303,050,120,325	60,018,161,419
2008	387,021,934,588	188,896,370,335	122,988,240,061	75,137,324,192	324,003,218,665	63,018,715,923
2009	392,939,664,165	193,318,192,619	122,428,680,719	77,192,790,827	328,482,849,682	64,456,814,483
2010	377,321,501,247	184,198,156,613	115,883,486,979	77,239,857,655	313,276,715,255	64,044,785,992
2011	346,927,348,794	163,156,709,903	108,079,190,071	75,691,448,820	284,107,332,029	62,820,016,765
2012	319,439,819,648	144,135,645,142	99,465,694,773	75,838,479,733	257,611,768,627	61,828,051,021

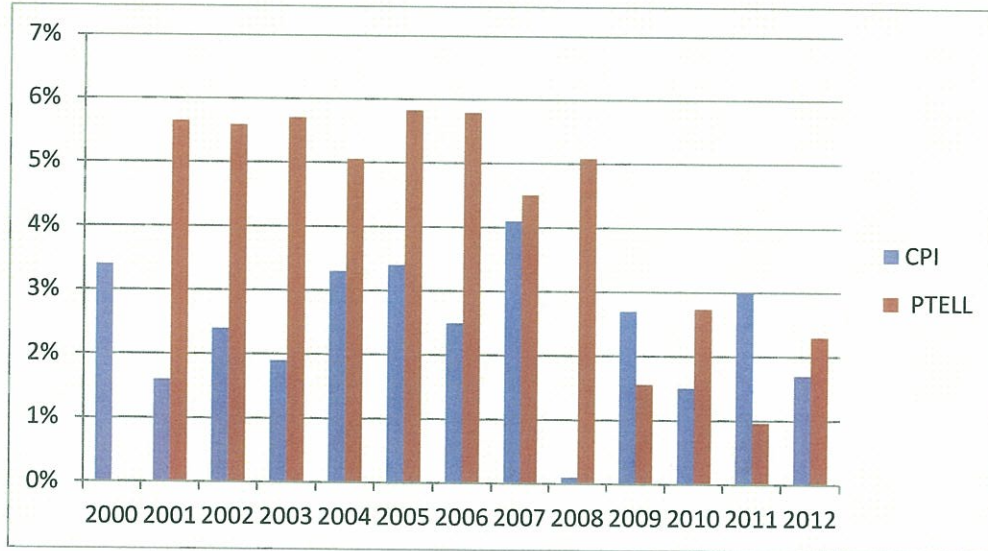
Tax Enteded (Billed)

Year	Statewide	CPI	Statewide	Cook	Cook	Collar	Collar	Rest of State	Rest
2000	15,967,696,133	3.4%		7,892,880,682		4,342,652,726		3,732,162,725	
2001	16,922,710,220	1.6%	6.0%	8,253,682,769	4.6%	4,737,046,490	9.1%	3,931,980,962	5.4%
2002	17,907,536,082	2.4%	5.8%	8,626,282,472	4.5%	5,139,941,205	8.5%	4,141,312,405	5.3%
2003	18,967,874,308	1.9%	5.9%	9,047,229,712	4.9%	5,547,776,277	7.9%	4,372,868,320	5.6%
2004	19,944,252,268	3.3%	5.1%	9,446,569,844	4.4%	5,957,246,672	7.4%	4,540,435,752	3.8%
2005	21,139,352,308	3.4%	6.0%	9,919,498,950	5.0%	6,414,577,512	7.7%	4,805,275,846	5.8%
2006	22,442,600,878	2.5%	6.2%	10,409,860,878	4.9%	6,905,248,914	7.6%	5,127,491,086	6.7%
2007	23,551,888,622	4.1%	4.9%	10,769,248,113	3.5%	7,335,962,227	6.2%	5,446,678,282	6.2%
2008	24,768,273,784	0.1%	5.2%	11,255,096,775	4.5%	7,753,947,726	5.7%	5,759,229,282	5.7%
2009	25,260,324,314	2.7%	2.0%	11,389,977,841	1.2%	7,917,814,462	2.1%	5,952,532,012	3.4%
2010	25,915,360,351	1.5%	2.6%	11,698,335,508	2.7%	8,118,214,213	2.5%	6,098,810,631	2.5%
2011	26,187,486,829	3.0%	1.1%	11,757,280,488	0.5%	8,231,122,616	1.4%	6,199,083,726	1.6%
2012	26,766,161,788	1.7%	2.2%	12,021,900,953	2.3%	8,441,964,345	2.6%	6,302,296,490	1.7%
			4.3%		3.5%		5.4%		4.4%
			5.6%		4.5%		7.3%		5.6%
			2.0%		1.7%		2.1%		2.3%

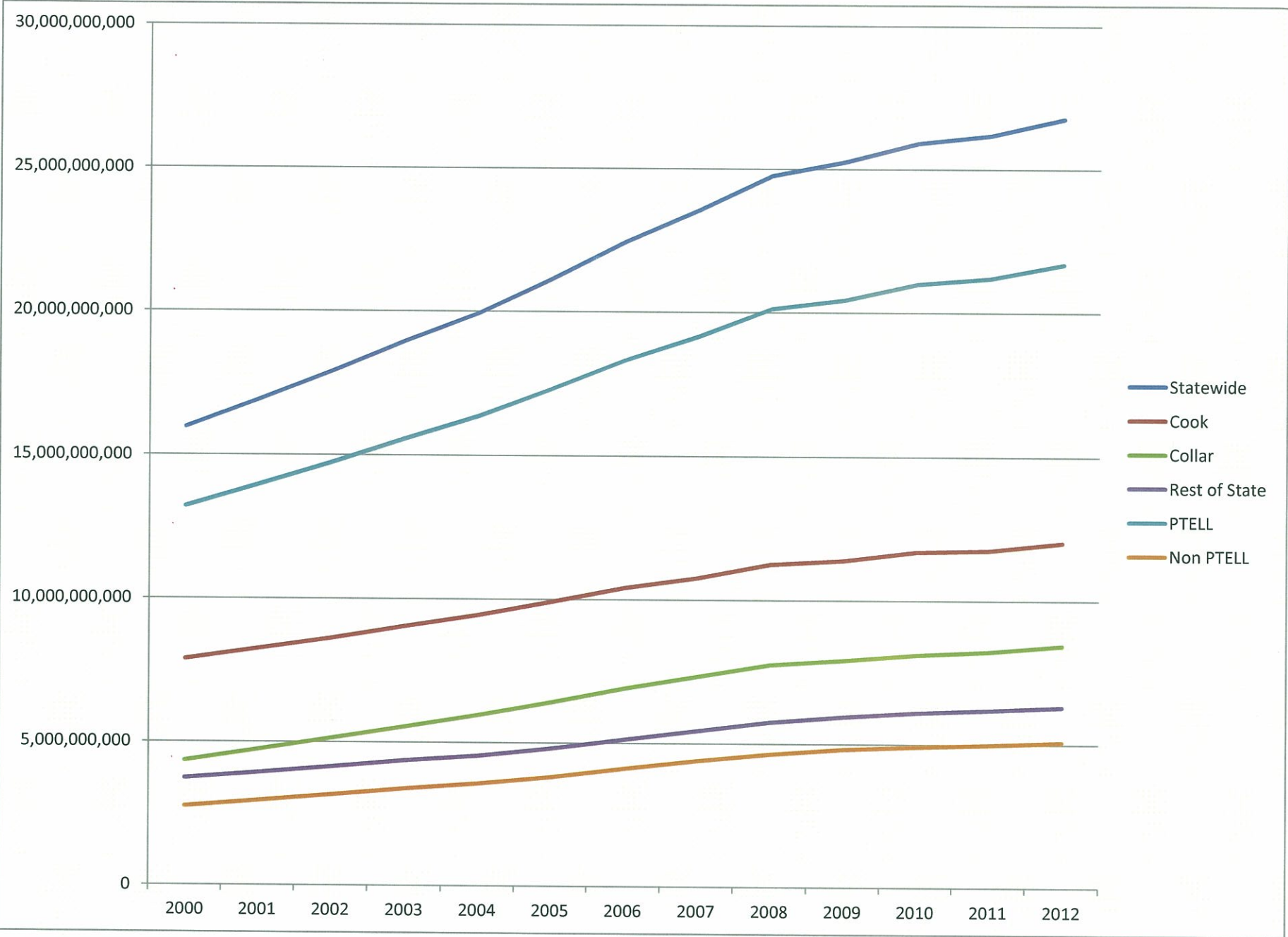
Tax Extended (Billed) Continued

Year	Tax Extended (Billed)			Yearly % Non- PTELL	Average Tax Rate						
	PTELL	PTELL	Non PTELL		Statewide	Cook	Collar	Rest of State	PTELL	Non PTELL	
2000	13,214,856,225		2,752,839,907		2000	7.82%	8.70%	6.86%	7.45%	7.96%	7.23%
2001	13,961,332,987	5.6%	2,961,377,234	7.6%	2001	7.68%	8.33%	6.89%	7.50%	7.76%	7.34%
2002	14,741,742,407	5.6%	3,165,793,675	6.9%	2002	7.44%	7.81%	6.81%	7.55%	7.44%	7.42%
2003	15,582,063,633	5.7%	3,385,810,675	6.9%	2003	7.30%	7.56%	6.70%	7.64%	7.27%	7.47%
2004	16,369,440,946	5.1%	3,574,811,322	5.6%	2004	7.18%	7.27%	6.64%	7.81%	7.09%	7.62%
2005	17,323,500,634	5.8%	3,815,851,674	6.7%	2005	6.98%	6.92%	6.54%	7.81%	6.85%	7.59%
2006	18,326,499,879	5.8%	4,116,100,999	7.9%	2006	6.77%	6.62%	6.42%	7.72%	6.64%	7.46%
2007	19,152,274,304	4.5%	4,399,614,318	6.9%	2007	6.49%	6.17%	6.28%	7.60%	6.32%	7.33%
2008	20,125,412,356	5.1%	4,642,861,428	5.5%	2008	6.40%	5.96%	6.30%	7.66%	6.21%	7.37%
2009	20,438,315,957	1.6%	4,822,008,358	3.9%	2009	6.43%	5.89%	6.47%	7.71%	6.22%	7.48%
2010	20,998,071,212	2.7%	4,917,289,139	2.0%	2010	6.87%	6.35%	7.01%	7.90%	6.70%	7.68%
2011	21,199,248,561	1.0%	4,988,238,268	1.4%	2011	7.55%	7.21%	7.62%	8.19%	7.46%	7.94%
2012	21,687,153,297	2.3%	5,079,008,491	1.8%	2012	8.38%	8.34%	8.49%	8.31%	8.42%	8.21%
	47.1%	4.1%	60.4%	5.1%							
		5.4%		6.6%							
		1.9%		2.3%							

CPI and PTELL Percentages 2000-2012



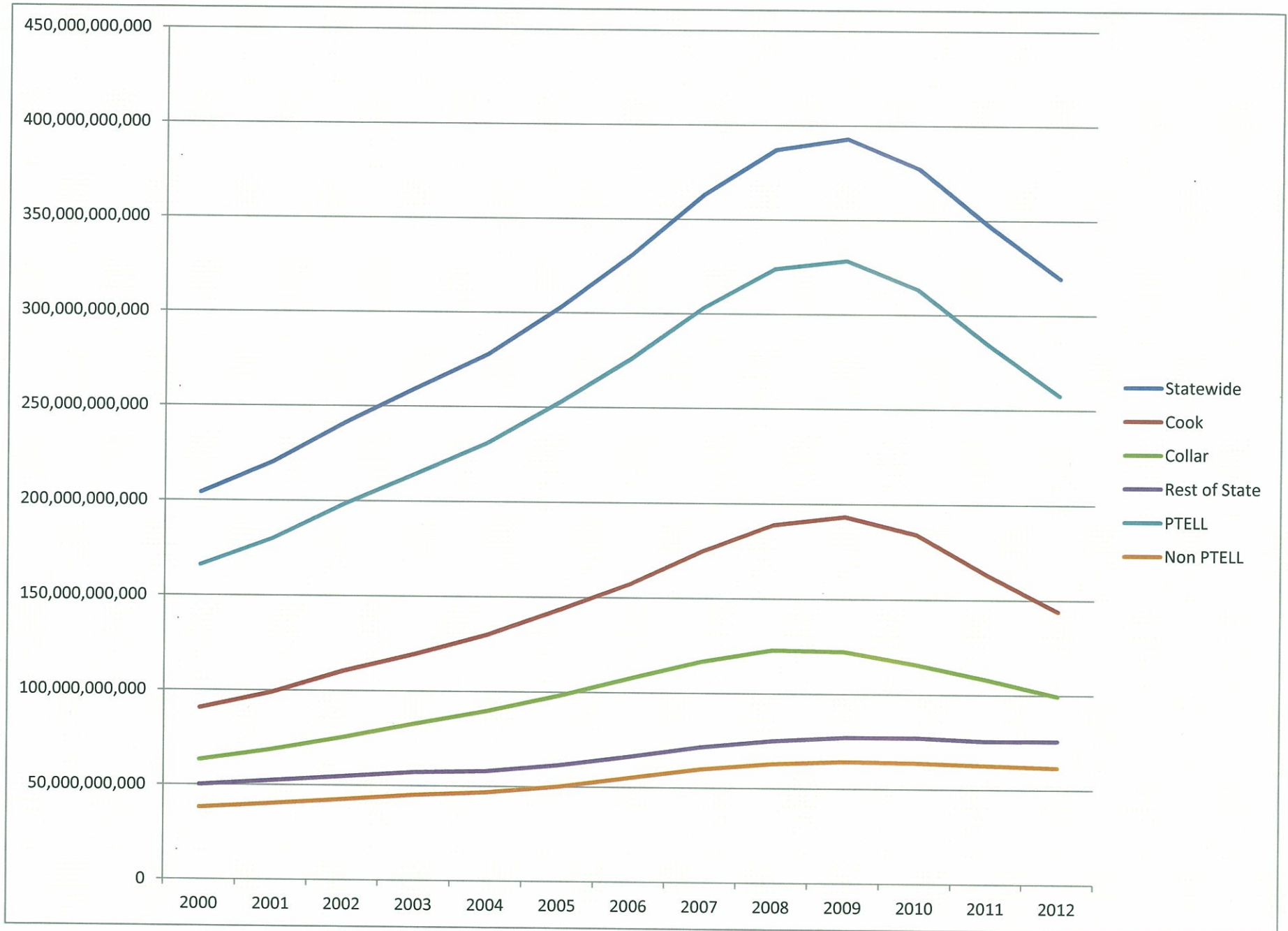
Taxes Extended 2000-2012



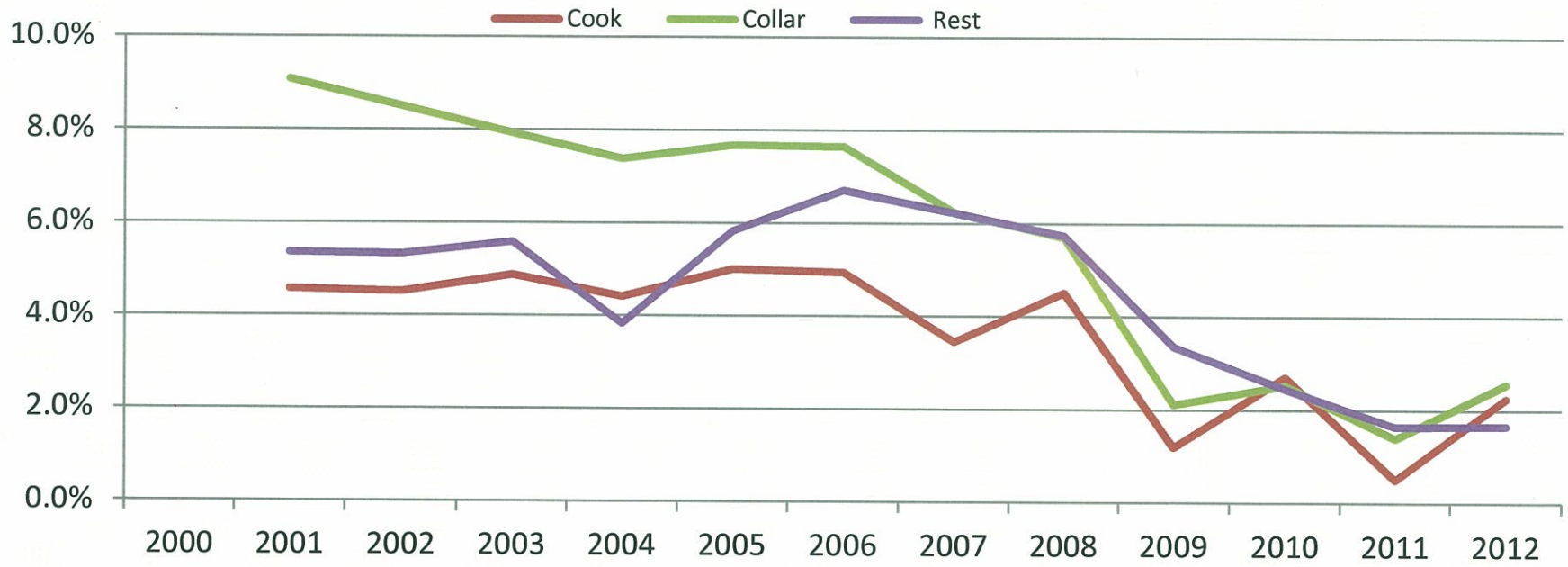
Average Tax Rate 2000-2012



Equalized Assessed Value 2000-2012



Percent Yearly Extension Growth



	CPI*	PTELL	CPI	
2001	3.4%	3.4%	5.6%	1.6%
2002	1.6%	1.6%	5.6%	2.4%
2003	2.4%	2.4%	5.7%	1.9%
2004	1.9%	1.9%	5.1%	3.3%
2005	3.3%	3.3%	5.8%	3.4%
2006	3.4%	3.4%	5.8%	2.5%
2007	2.5%	2.5%	4.5%	4.1%
2008	4.1%	4.1%	5.1%	0.1%
2009	0.1%	0.1%	1.6%	2.7%
2010	2.7%	2.7%	2.7%	1.5%
2011	1.5%	1.5%	1.0%	3.0%
2012	3.0%	3.0%	2.3%	1.7%

